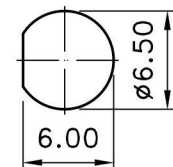
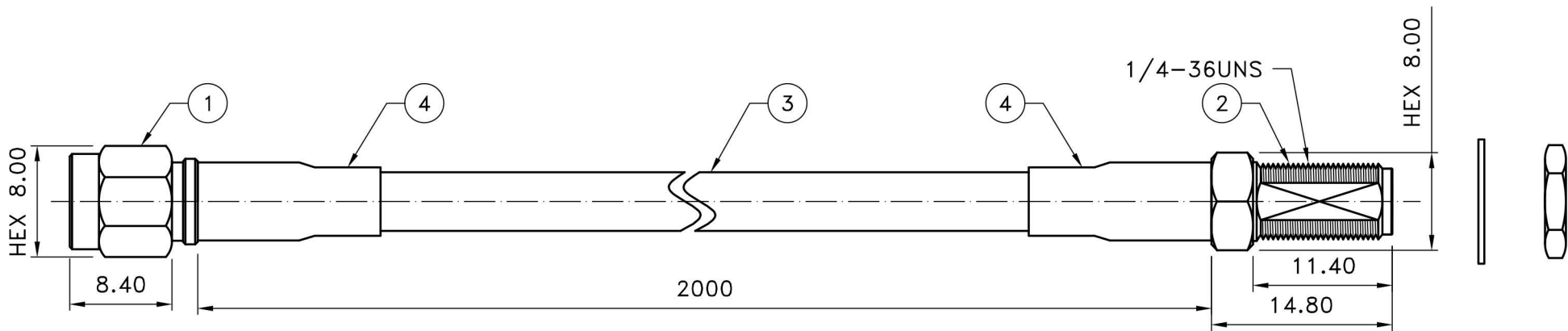


REV	DATE	DESCRIPTION	DRAWN



RECOMMENDED MOUNTING HOLE

NOTE:
 1.SMA MALE CRIMP
 CENTER PIN GOLD PLATING 20μ THICK OVER NICKEL STRIKE
 BODY GOLD PLATING 3μ THICK OVER NICKEL STRIKE
 BRASS AND PTFE PER SGS
 PTFE : TOMBO No.9002
 FINISH PLATING THICKNESS IN MICRO-INCHES
 COPPER PARTS AUTOMATIC CNC MANUFACTURING
 2.SMA FEMALE BULKHEAD CRIMP
 CENTER PIN GOLD PLATING 20μ THICK OVER NICKEL STRIKE
 BODY GOLD PLATING 3μ THICK OVER NICKEL STRIKE
 BRASS AND PTFE PER SGS
 PTFE : TOMBO No.9002
 FINISH PLATING THICKNESS IN MICRO-INCHES
 COPPER PARTS AUTOMATIC CNC MANUFACTURING
 3.LOW LOSS 200A COAXIAL CABLE/3D
 ATTENUATION : 0.32dB/m@900MHZ 0.42dB/m@1800MHZ 0.61dB/m@3000MHZ
 CONDUCTOR : BARE COPPER WIRE/Ø1.12mm
 INSULATION : GAS-FPE/Ø2.95mm
 TAPE : BONDED ALUMINUM FOIL
 SHIELD : TINNED COPPER WARE/16*4*0.10mm/59% COVERAGE
 JACKET : PVC/Ø4.95mm

Prohibit re-circulating

RoHS COMPLIANT

WIFI-Link
 台灣歲海尼可

NO	DESCRIPTION	MATERIAL	FINISH	Q'ty
4	D0176 (SHRINK TUBE)	PE	BLACK	2
3	LLC200	ASSY	BLACK	1
2	WL-SMA-2-BJ200	BRASS	GOLD	1
1	WL-SMA-1-200	BRASS	GOLD	1

NOTE	DIMENSION
1.STRIP ALL BURRS. 2.ALL DIMENSIONS ARE AFTER PLATING. 3.DIAMETERS ON COMMON CENTERS. TO BE CONCENTRIC WITHIN 0.1 T.I.R 4.CHAMFER 1ST & LAST THREADS 45° 5.BREAK ALL CONNERS & EDGES CO.15 MAX.	UNLESS OTHERWISE NOTED TOLERANCES 0.X=±0.2 0.XX=±0.1 CABLE LENGTH: L ≥10000=+ ⁵⁰ ₀ 1000≤L<10000=+ ³⁰ ₀ L<1000=+ ⁸ ₀

TITLE	
SMA MALE-SMA FEMALE	
DRAWING NO. SMAP-SMAJB-200-2.0	
APPROVED	DRAWN DATE
CHECKED	SCALE
DRAWN	UNIT

05/23/17

2:1

ALICE

mm