

5.1 GHz Wireless Antenna

< Mu-5100-18 >

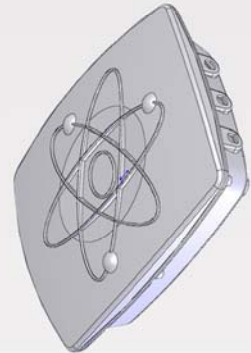
MuTenna™



Multi-Function Weatherproof Enclosure with the integrated 5.1GHz 18 dBi Antenna

This product - MuTenna – is designed by RF Castle and this outdoor weatherproof enclosure with an integrated 18 dBi flat panel antenna for 5.1GHz applications such as Wireless LAN.

This type of product can save a lot of space and provides the pleasing look. In addition, the reason of naming “MuTenna” is – it is a multi-functional Antenna.



- Designed for wireless LAN communications
- Mounted easily for the outdoor application
- Designed to obtain maximum gain
- Made with weatherproof and corrosion resistant

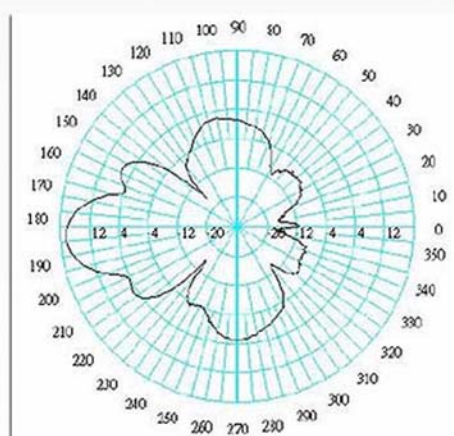
Features

1. Having a Big space of this Weatherproof Enclosure than general similar products on the market.
2. Putting two Access Points inside, the signal will could be for two directions.
3. Being Suitable for the MIMO AP. We have the three N female connectors, mounted on the based of unit.
4. Utilizing the integrated 5.1GHz 18dBi Panel antenna and other external antennas such as Omni antenna or Grid High-Gain antenna.
5. If you don't required to contact external antenna, you can lock with three weatherproof covers directly on the weatherproof Enclosure
6. Installing Easily by yourselves with any required equipment

Specifications

Technical information ^o	
Frequency:	5100-5800MHz
Gain/Beamwidth Degrees:	16dBi ^o
VSWR:	≤1.5 : 1.1
Impedance:	50 Ohm.1
Dimensions ^o	
Size:	L360×W300×H100.mm ^o
Weight:	3000g ^o
Inside Connector:	SMA-TYPE /FEMALE ^o
Available Options ^o	
Available Options: ^o	
AP (Installed and Tested):	Any Brand of AP.1
Connection (20cm pigtail) ^o	TNC MALE RP ^o
^o	SMA male RP.1
^o	MC card.1
^o	MMCX male RA.1
^o	MMCX male RA AP.1
^o	IPEX/U.FL.1

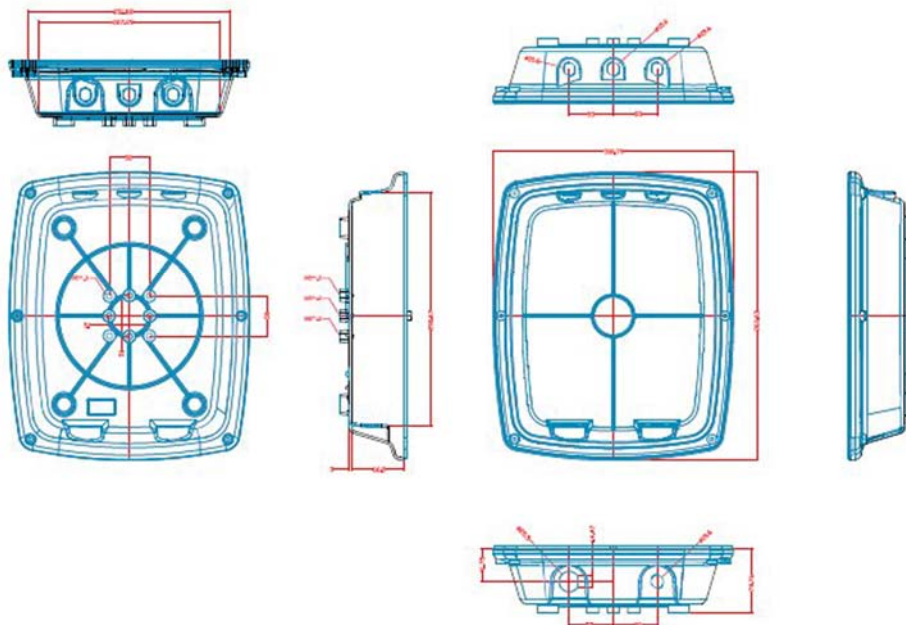
Plane field patterns



H

2

REV	DESCRIPTION	DRAWN	DATE



UNLESS OTHERWISE SPECIFIED					X, Y, Z OR DIMENSION		APPROVED		華城電子有限公司 RF CASTLE ELECTRONICS co., Ltd	
1. REMOVE ALL BURRS					UNLESS OTHERWISE		CHECKED		TITLE	
2. BREAK ALL CORNERS & EDGES CO.15 MAX					NOTED TOLERANCES		DRAWN		DRAWING NO.	
3. CHAMFER 1ST & LAST THEATERS 45°					0.5-6=±0.2		CASH		REV	
4. DIAMETERS ON COMMON CENTERS					6-30=±0.4		DRAWN DATE 07/07/19		FILE NO. D:\DWG\Mutenna	
5. ALL DIMENSIONS ARE AFTER PLATING					30-120=±0.6					
					120-315=±1.0					
					ANGLES=±1°					
					SCALE 4/1					
					UNIT MM					



©RF CASTLE ELECTRONICS CO., LTD
NO.151, Sec 3, Haidian RD., Annan District, Tainan City 70966, Taiwan, R.O.C
Tel: +886-6-2475285 Fax: +886-6-2475282
Email: sales@rfcastle.com http://www.rfcastle.com
RF Castle IS Recognized By WiFi-Link TECHNOLOGIES

Instruction of MuTenna



1. Three weatherproof caps are on the top of MuTenna.
2. If any External Antenna is needed, End-Users can Easily Install with a N Female BKD Cable Assembly. In order to secure of the connector on the MuTenna, an affixed ring that we designed is being added.
3. Install an 2.4GHz OMNI 8dBi Antenna <N male connector> can use a N Female BKD cable assembly. In addition, End-Users can use any LOW LOSS Cable Assembly to connect any high gain antenna, such as GRID or PANEL, with MuTenna.
4. 2.4GHz OMNI 8dBi <N Male connector> is an option which is depending on your AP.
5. MIMO AP, Router, or Up to 3 pieces of Antennas can be installed in the MuTenna.



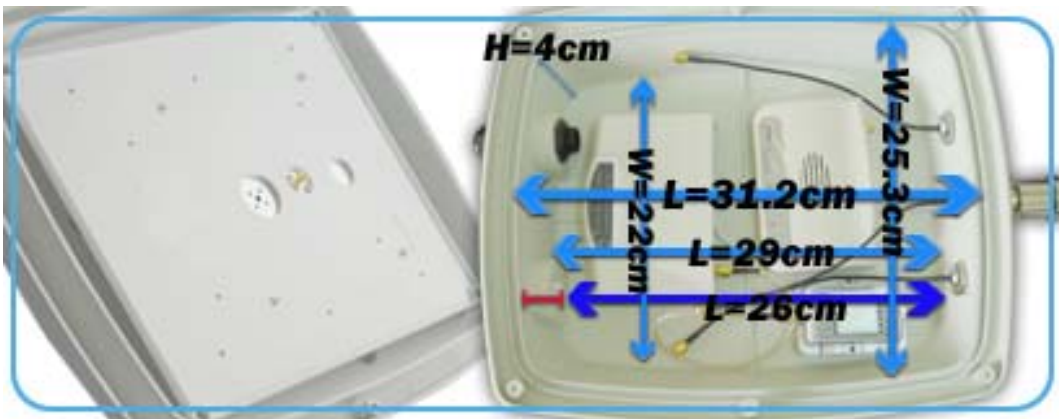
1. Adding An Extra N Female BKD Cable Assembly can attached an High Gain Antenna.
2. Also, You can require a cable gland for your weatherproof cap in order to install the power adapter cable of booster.



1. L-Bracket and eight holes for the screws ensure that MuTenna will be installed very Securely and will able to resist wind.
2. The position of the L-Bracket's hole will able to be adjusted.
The L-Bracket is also designed – Can be adjusted by the direction.



1. Up to three Extra 2.4GHz OMNI 8dBi Antennas <N male connector> can be putted into the inner of MuTenna with the original set. Without extra equipment, the Gross Weight of a set of MuTenna is 3000G.
2. The big internal size is one of MuTenna's features. End-Users can install up to two sets of small AP.
Also, A Flat Panel Antenna has be integrated inside.
And, the choices are 2.4GHz, 5.5GHz, 5.8GHz, and 5GHz Full Band.
Or, End-Users can install their own design or any extra DIY Components.
3. Two different frequencies can be used in MuTenna Simultaneously.
For Example, the internal frequency is 2.4GHz, End-Users can use 5GHz.
Note: Which Frequency can be used is depending on the AP.



1. As your reference, the internal size of the MuTenna will be as above instruction of the picture.

Mutenna

Instruction of Mutenna Accessories

Technical information

Frequency: 2400 - 2483MHz

Gain/Beamwidth Degrees: 16 dBi-H 20° V $\pm 6^\circ$

Frequency: 5100 - 5800MHz

Frequency: 5725 - 5850MHz

VSWR: 1.5 1

Impedance: 50 Ohm

Dimensions

Size: L360×W300×H100

Weight: 3000g

Inside Connector: SMA-type / female

Available Options

AP (Installed and Tested): Any Brand of AP

Connection (20cm pigtail) TNC male RP

SMA male RP

MC card

MMCX male RA

MMCX male RA AP

IPEX/U.FL

