

5.8 GHz Wireless Antenna

< Mu-5775-18 >

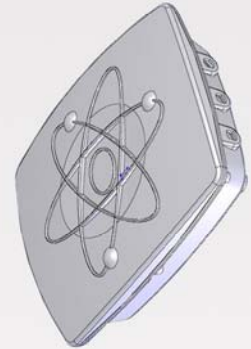
MuTenna™



Multi-Function Weatherproof Enclosure with the integrated 5.8GHz 18 dBi Antenna

This product - MuTenna – is designed by RF Castle and this outdoor weatherproof enclosure with an integrated 18 dBi flat panel antenna for 5.8GHz applications such as Wireless LAN.

This type of product can save a lot of space and provides the pleasing look. In addition, the reason of naming “MuTenna” is – it is a multi-functional Antenna.



- Designed for wireless LAN communications
- Mounted easily for the outdoor application
- Designed to obtain maximum gain
- Made with weatherproof and corrosion resistant

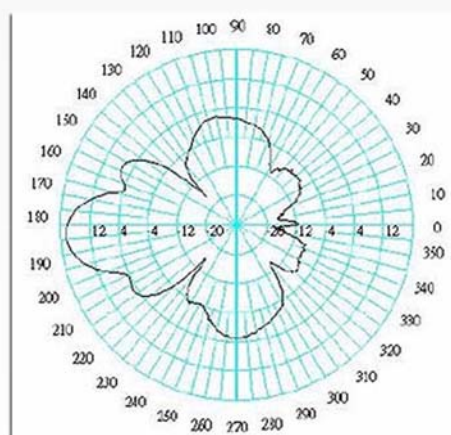
Features

1. Having a Big space of this Weatherproof Enclosure than general similar products on the market.
2. Putting two Access Points inside, the signal will could be for two directions.
3. Being Suitable for the MIMO AP. We have the three N female connectors, mounted on the based of unit.
4. Utilizing the integrated 5.8GHz 18dBi Panel antenna and other external antennas such as Omni antenna or Grid High-Gain antenna.
5. If you don't required to contact external antenna, you can lock with three weatherproof covers directly on the weatherproof Enclosure
6. Installing Easily by yourselves with any required equipment

Specifications

Technical information ^o	
Frequency:	5725-5850MHz ^o
Gain/ <u>Beamwidth</u> Degrees:	16dBi ^o
VSWR:	≤1.5 : 1.1
Impedance:	50 Ohm _s
Dimensions ^o	
Size:	L360×W300×H100.mm ^o
Weight:	300.0g ^o
Inside Connector:	SMA-TYPE /FEMALE ^o
Available Options ^o	
Available Options: ^o	
AP (Installed and Tested):	Any Brand of AP _s
Connection (20cm pigtail) ^o	TNC MALE RP ^o
^o	SMA male RP _s
^o	MC card _s
^o	MMCX male RA _s
^o	MMCX male RA AP _s
^o	IPEX/U.FL _s

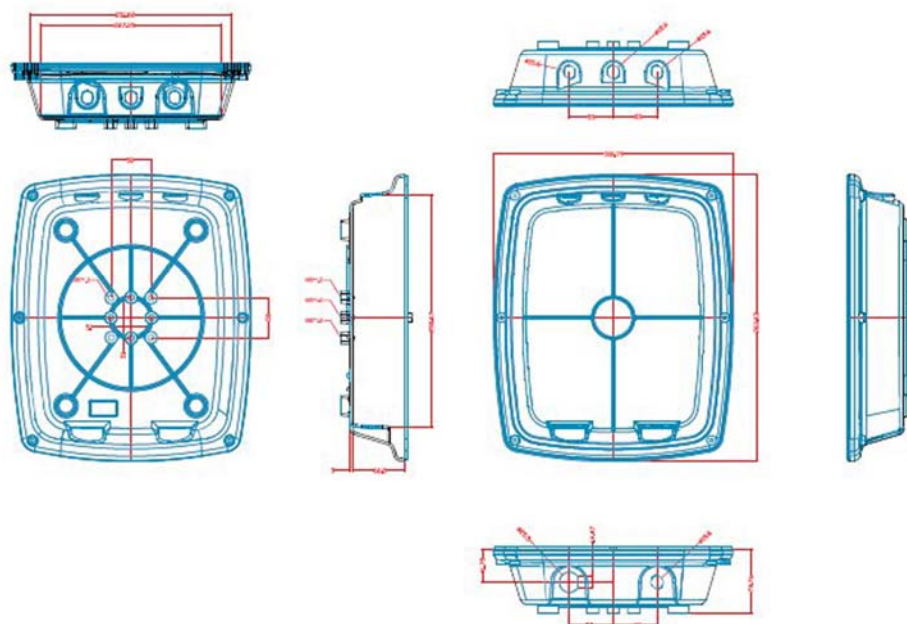
Plane field patterns



H

2

REV	DESCRIPTION	DRAWN	DATE



UNLESS OTHERWISE SPECIFIED 1. REMOVE ALL BURRS 2. BREAK ALL CORNERS & EDGES TO 15 MAX. 3. CHAMFER 1ST & LAST THREADS 45° 4. DIAMETERS ON COMMON CENTERS 5. TO BE CONCENTRIC WITH HOLE 6. ALL DIMENSIONS ARE AFTER PLATING					UNLESS OTHERWISE NOTED TOLERANCES 0-30=±0.2 30-120=±0.4 120-315=±1.0 ANGLES=±1°	APPROVED CHECKED DRAWN CASH SCALE 4/1 UNIT MM DRAWN DATE 07/07/19	 華城電子有限公司 ELECTRONICS co.,Ltd TITLE Mutenna DRAWING NO. Mutenna FILE NO. D:\DWG\Mutenna
2		1					
1		1					
NO	Description	Qty	Material	Finish			

Hot MuTenna™

Multi-Function Weatherproof Enclosure with integrated 2.4GHz 16 dBi and 5.3 / 5.5 / 5.8 GHz 18 dBi Panel Antenna.

This type of product can save a lot of space and provides the pleasing look. It has Big space of this Weatherproof Enclosure / Putting two Access Points inside, the signal will could be for two directions / Suitable for the MIMO AP / can contact external antennas such as Omni antenna or Grid High-Gain antenna / Installing Easily by yourselves with any required equipment.

Multi-Function



©RF CASTLE ELECTRONICS CO., LTD
 NO.151, Sec 3, Haidian RD., Annan District, Tainan City 70966, Taiwan, R.O.C
 Tel:+886-6-2475285 Fax:+886-6-2475282
 Email:sales@rfcastle.com http://www.rfcastle.com
 RF Castle IS Recognized By WiFi-Link TECHNOLOGIES

Instruction of MuTenna



1. Three weatherproof caps are on the top of MuTenna.
2. If any External Antenna is needed, End-Users can Easily Install with a N Female BKD Cable Assembly. In order to secure of the connector on the MuTenna, an affixed ring that we designed is being added.
3. Install an 2.4GHz OMNI 8dBi Antenna <N male connector> can use a N Female BKD cable assembly. In addition, End-Users can use any LOW LOSS Cable Assembly to connect any high gain antenna, such as GRID or PANEL, with MuTenna.
4. 2.4GHz OMNI 8dBi <N Male connector> is an option which is depending on your AP.
5. MIMO AP, Router, or Up to 3 pieces of Antennas can be installed in the MuTenna.



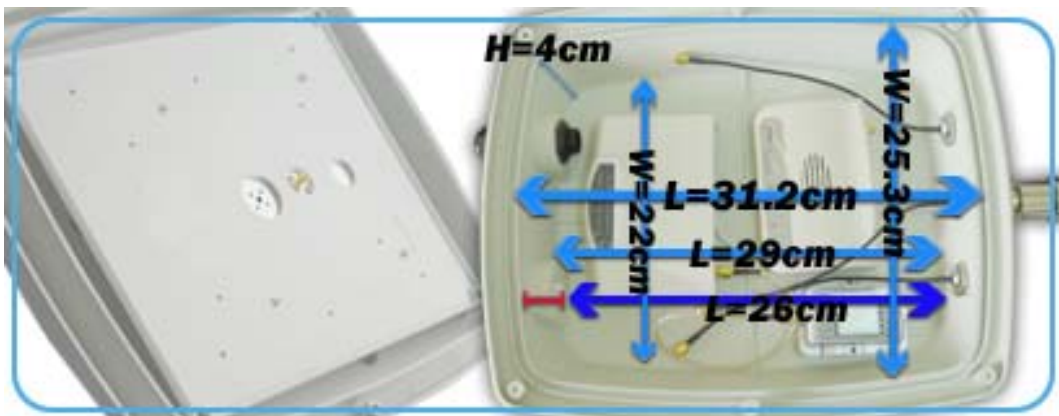
1. Adding An Extra N Female BKD Cable Assembly can attached an High Gain Antenna.
2. Also, You can require a cable gland for your weatherproof cap in order to install the power adapter cable of booster.



1. L-Bracket and eight holes for the screws ensure that MuTenna will be installed very Securely and will able to resist wind.
2. The position of the L-Bracket's hole will able to be adjusted.
The L-Bracket is also designed – Can be adjusted by the direction.



1. Up to three Extra 2.4GHz OMNI 8dBi Antennas <N male connector> can be putted into the inner of MuTenna with the original set. Without extra equipment, the Gross Weight of a set of MuTenna is 3000G.
2. The big internal size is one of MuTenna's features. End-Users can install up to two sets of small AP.
Also, A Flat Panel Antenna has be integrated inside.
And, the choices are 2.4GHz, 5.5GHz, 5.8GHz, and 5GHz Full Band.
Or, End-Users can install their own design or any extra DIY Components.
3. Two different frequencies can be used in MuTenna Simultaneously.
For Example, the internal frequency is 2.4GHz, End-Users can use 5GHz.
Note: Which Frequency can be used is depending on the AP.



1. As your reference, the internal size of the MuTenna will be as above instruction of the picture.

MUtenna

Instruction of Mutenna Accessories

Technical information

Frequency: 2400 - 2483MHz

Gain/Beamwidth Degrees: 16 dBi-H 20° V $\pm 6^\circ$

Frequency: 5100 - 5800MHz

Frequency: 5725 - 5850MHz

VSWR: 1.5 1

Impedance: 50 Ohm

Dimensions

Size: L360×W300×H100

Weight: 3000g

Inside Connector: SMA-type / female

Available Options

AP (Installed and Tested): Any Brand of AP

Connection (20cm pigtail) TNC male RP

SMA male RP

MC card

MMCX male RA

MMCX male RA AP

IPEX/U.FL

